

## 测试报告

No. CANML1807274102

日期: 2018年05月11日 第1页,共7页

广州市帝天印刷材料有限公司  
广州市白云区人和镇矮岗村第三工业区自编四号之二

以下测试之样品是由申请者所提供及确认: A 尔斯-专色墨混合

SGS工作编号: GZIN1804018917PC - GZ  
客户参考信息: 请参见备注  
制造商: 广州市帝天印刷材料有限公司  
样品接收日期: 2018年04月20日  
测试周期: 2018年04月20日 - 2018年05月08日  
测试要求: 根据客户要求测试  
测试方法: 请参见下一页  
测试结果: 请参见下一页  
结论: 基于所送样品进行的测试, 镉、铅、汞、六价铬、多溴联苯(PBBs)、多溴二苯醚(PBDEs)、邻苯二甲酸酯(如邻苯二甲酸二丁酯(DBP)、邻苯二甲酸丁苄酯(BBP)、邻苯二甲酸二(2-乙基己基)酯(DEHP)和邻苯二甲酸二异丁酯(DIBP))的测试结果符合欧盟RoHS指令2011/65/EU附录II的修正指令(EU) 2015/863的限值要求。

通标标准技术服务有限公司广州分公司  
授权签名

许锋华

Luke Xu 许锋华  
批准签署人

备注: 本报告是编号为CANML1807274101报告的中文版本。



## 测试报告

No. CANML1807274102

日期: 2018年05月11日 第2页,共7页

测试结果:

### 测试样品描述:

样品编号	SGS样品ID	描述
SN1	CAN18-072741.001	红色液体

备注:

- (1) 1 mg/kg = 1 ppm = 0.0001%
- (2) MDL = 检测极限值
- (3) ND = 未检出 (< MDL)
- (4) "-" = 未规定

### RoHS指令2011/65/EU附录II的修正指令(EU) 2015/863

测试方法: 参考IEC 62321-4:2013+A1:2017, IEC 62321-5:2013, IEC 62321-7-2:2017, IEC 62321-6:2015 和 IEC 62321-8:2017, 采用 ICP-OES, UV-Vis 和 GC-MS 进行分析。

测试项目	限值	单位	MDL	001
镉 (Cd)	100	mg/kg	2	ND
铅 (Pb)	1,000	mg/kg	2	ND
汞 (Hg)	1,000	mg/kg	2	ND
六价铬(Cr(VI))	1,000	mg/kg	8	ND
多溴联苯之和(PBBs)	1,000	mg/kg	-	ND
一溴联苯	-	mg/kg	5	ND
二溴联苯	-	mg/kg	5	ND
三溴联苯	-	mg/kg	5	ND
四溴联苯	-	mg/kg	5	ND
五溴联苯	-	mg/kg	5	ND
六溴联苯	-	mg/kg	5	ND
七溴联苯	-	mg/kg	5	ND
八溴联苯	-	mg/kg	5	ND
九溴联苯	-	mg/kg	5	ND
十溴联苯	-	mg/kg	5	ND
多溴二苯醚之和(PBDEs)	1,000	mg/kg	-	ND
一溴二苯醚	-	mg/kg	5	ND
二溴二苯醚	-	mg/kg	5	ND
三溴二苯醚	-	mg/kg	5	ND
四溴二苯醚	-	mg/kg	5	ND
五溴二苯醚	-	mg/kg	5	ND



Unless otherwise agreed in writing, this document is issued by the Company subject to its General Conditions of Service printed overleaf, available on request or accessible at <http://www.sgs.com/en/Terms-and-Conditions.aspx> and, for electronic format documents, subject to Terms and Conditions for Electronic Documents at <http://www.sgs.com/en/Terms-and-Conditions/Terms-e-Document.aspx>. Attention is drawn to the limitation of liability, indemnification and jurisdiction issues defined therein. Any holder of this document is advised that information contained hereon reflects the Company's findings at the time of its intervention only and within the limits of Client's instructions, if any. The Company's sole responsibility is to its Client and this document does not exonerate parties to a transaction from exercising all their rights and obligations under the transaction documents. This document cannot be reproduced except in full, without prior written approval of the Company. Any unauthorized alteration, forgery or falsification of the content or appearance of this document is unlawful and offenders may be prosecuted to the fullest extent of the law. Unless otherwise stated the results shown in this test report refer only to the sample(s) tested.

Attention: To check the authenticity of testing /inspection report & certificate, please contact us at telephone: (86-755) 8307 1443, or email: CN\_Doccheck@sgs.com

## 测试报告

No. CANML1807274102

日期: 2018年05月11日 第3页,共7页

测试项目	限值	单位	MDL	001
六溴二苯醚	-	mg/kg	5	ND
七溴二苯醚	-	mg/kg	5	ND
八溴二苯醚	-	mg/kg	5	ND
九溴二苯醚	-	mg/kg	5	ND
十溴二苯醚	-	mg/kg	5	ND
邻苯二甲酸二丁酯 (DBP)	1000	mg/kg	50	ND
邻苯二甲酸丁苯酯(BBP)	1000	mg/kg	50	ND
邻苯二甲酸二(2-乙基己基)酯(DEHP)	1000	mg/kg	50	ND
邻苯二甲酸二异丁酯(DIBP)	1000	mg/kg	50	ND

### 备注:

(1)最大允许极限值引用自RoHS指令(EU) 2015/863。IEC 62321系列等同于 EN 62321系列  
[http://www.cenelec.eu/dyn/www/f?p=104:30:1742232870351101:::FSP\\_ORG\\_ID,FSP\\_LANG\\_ID:1258637,25](http://www.cenelec.eu/dyn/www/f?p=104:30:1742232870351101:::FSP_ORG_ID,FSP_LANG_ID:1258637,25)

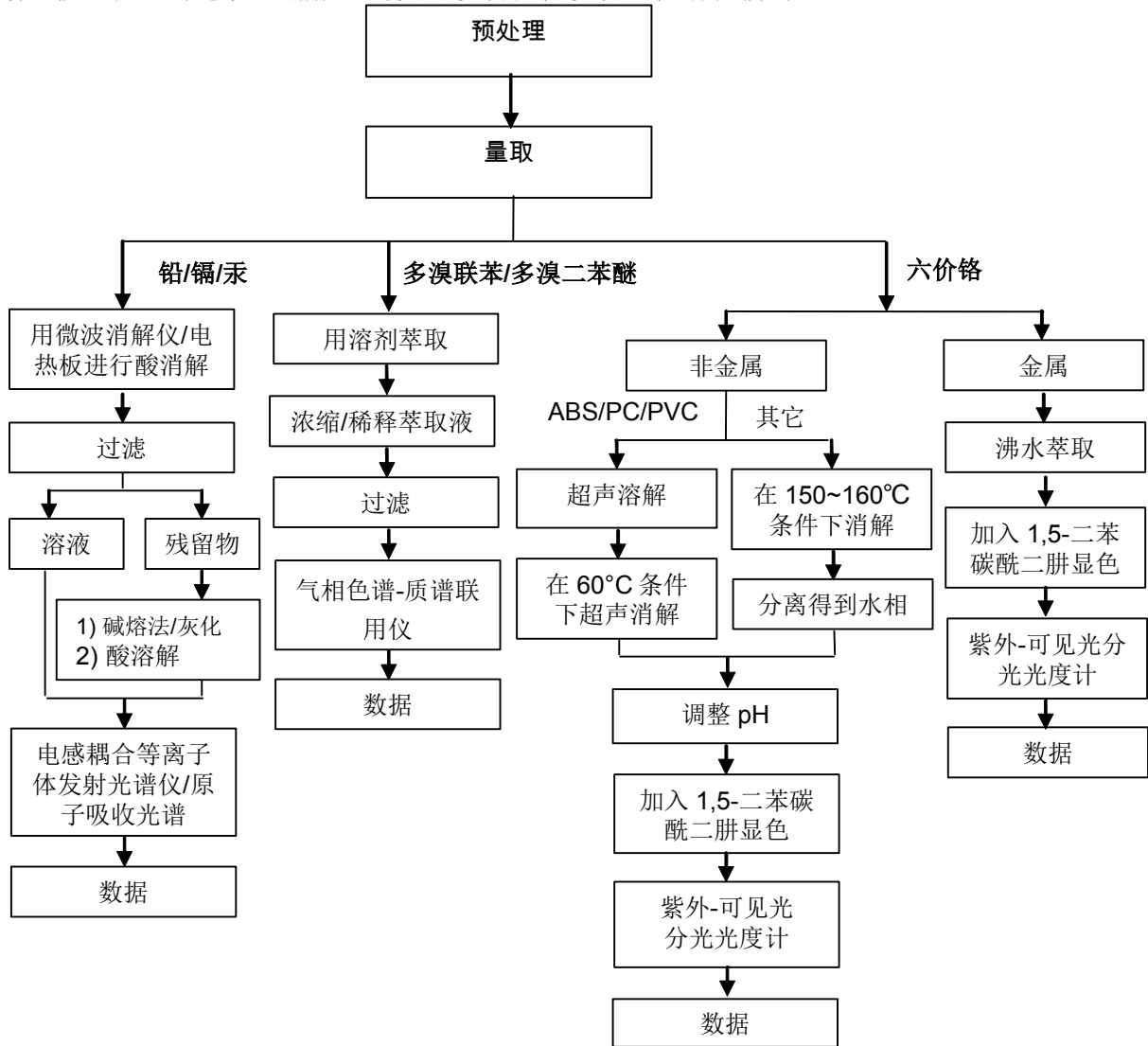
备注: 所示结果为湿样品总重量中的含量。



附件

## Pb/Cd/Hg/Cr<sup>6+</sup>/PBBs/PBDEs 测试流程图

- 1) 分析人员: 张梓路 / 胡香云
- 2) 项目负责人: 汪丹 / 刘琼
- 3) 样品按照下述流程被完全消解 (六价铬和多溴联苯/多溴二苯醚测试除外)。



Unless otherwise agreed in writing, this document is issued by the Company subject to its General Conditions of Service printed overleaf, available on request or accessible at <http://www.sgs.com/en/Terms-and-Conditions.aspx> and, for electronic format documents, subject to Terms and Conditions for Electronic Documents at <http://www.sgs.com/en/Terms-and-Conditions/Terms-e-Documents.aspx>. Attention is drawn to the limitation of liability, indemnification and jurisdiction issues defined therein. Any holder of this document is advised that information contained hereon reflects the Company's findings at the time of its intervention only and within the limits of Client's instructions, if any. The Company's sole responsibility is to its Client and this document does not exonerate parties to a transaction from exercising all their rights and obligations under the transaction documents. This document cannot be reproduced except in full, without prior written approval of the Company. Any unauthorized alteration, forgery or falsification of the content or appearance of this document is unlawful and offenders may be prosecuted to the fullest extent of the law. Unless otherwise stated the results shown in this test report refer only to the sample(s) tested.

Attention: To check the authenticity of testing /inspection report & certificate, please contact us at telephone: (86-755) 8307 1443, or email: CN\_Doccheck@sgs.com

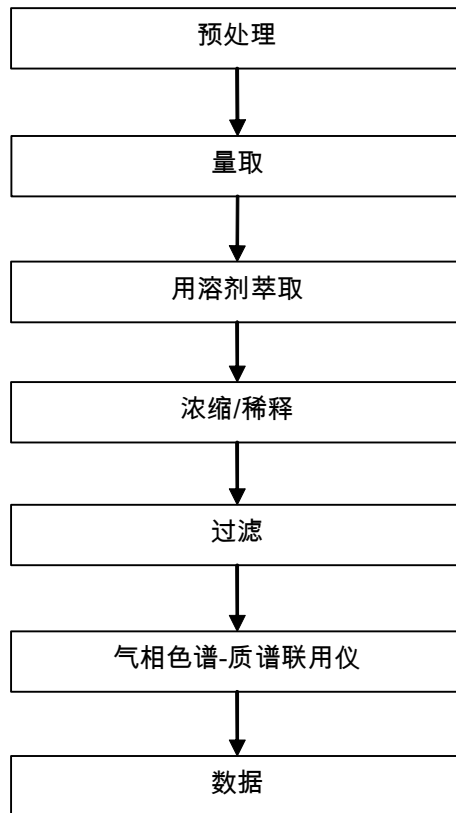
SGS-CSTC 标准检测技术有限公司 广州分公司  
Guangzhou Branch Testing Center Chemical Laboratory

198 Kazhu Road, Sciotech Park Guangzhou Economic & Technology Development District, Guangzhou, China 510663 t (86-20) 82155555 f (86-20) 82075113 www.sgs.com.cn  
中国·广州·经济技术开发区科学城科珠路198号 邮编: 510663 t (86-20) 82155555 f (86-20) 82075113 e sgs.china@sgs.com

附件

### Phthalates 测试流程图

- 1) 分析人员: 胡香云
- 2) 项目负责人: 刘琼



Unless otherwise agreed in writing, this document is issued by the Company subject to its General Conditions of Service printed overleaf, available on request or accessible at <http://www.sgs.com/en/Terms-and-Conditions.aspx> and, for electronic format documents, subject to Terms and Conditions for Electronic Documents at <http://www.sgs.com/en/Terms-and-Conditions/Terms-e-Document.aspx>. Attention is drawn to the limitation of liability, indemnification and jurisdiction issues defined therein. Any holder of this document is advised that information contained hereon reflects the Company's findings at the time of its intervention only and within the limits of Client's instructions, if any. The Company's sole responsibility is to its Client and this document does not exonerate parties to a transaction from exercising all their rights and obligations under the transaction documents. This document cannot be reproduced except in full, without prior written approval of the Company. Any unauthorized alteration, forgery or falsification of the content or appearance of this document is unlawful and offenders may be prosecuted to the fullest extent of the law. Unless otherwise stated the results shown in this test report refer only to the sample(s) tested.

Attention: To check the authenticity of testing /inspection report & certificate, please contact us at telephone: (86-755) 8307 1443, or email: CN\_Doccheck@sgs.com

备注:

A 尔斯- TF195- 中黄 (红相)、A 尔斯-000431 大红、A 尔斯-000599 金红、A 尔斯-000600 大红、A 尔斯-000632 桔黄、A 尔斯-000636 深蓝、A 尔斯-000639 深红、A 尔斯-05-03 金红、A 尔斯-200U 深红、A 尔斯-302 红金、A 尔斯-302 快干剂、A 尔斯-302 青金、A 尔斯-44 玫瑰红、A 尔斯-46 射光兰、A 尔斯-48 绿、A 尔斯-60 荧光桔黄、A 尔斯-801 荧光蓝、A 尔斯-802C 荧光绿、A 尔斯-PT803C 荧光黄、A 尔斯-804C 荧光橙、A 尔斯-805C 荧光金红、A 尔斯-806 荧光桃红、A 尔斯-807 荧光玫瑰红、A 尔斯-871 青金、A 尔斯-873 红金、A 尔斯-99A 银墨、A 尔斯-99 银墨、A 尔斯 DT-01 桔红、A 尔斯 DT-03 金红、A 尔斯 DT-04 大红、A 尔斯 DT-09 深红、A 尔斯-DT-17 桃红、A 尔斯-DT-18 玫瑰红、A 尔斯 DT-29 桔黄、A 尔斯-DT-30 孔蓝、A 尔斯-DT-36 品蓝、A 尔斯-DT-37 青莲蓝、A 尔斯 DT-40 白墨、A 尔斯-DT-60 绿 (蓝相)、A 尔斯-DT-66 绿 (黄相)、A 尔斯 DT801 荧光墨、A 尔斯 DT802 荧光墨、A 尔斯 DT803 荧光墨、A 尔斯 DT804 荧光墨、A 尔斯 DT805 荧光墨、A 尔斯 DT806 荧光墨、A 尔斯 DT807 荧光墨、A 尔斯 DT90-83 银、A 尔斯 DT-94-90 青金、A 尔斯 DT 红金(CS)、A 尔斯 DT 青金(CS)、A 尔斯 DT 银(CS)、A 尔斯-GD196-青金、A 尔斯-GD197-红金、A 尔斯-GD198-银墨、A 尔斯-GD199-特白、A 尔斯-GD200-特黑、A 尔斯-NS 桃红、A 尔斯-P.T rhodamine 桃红、A 尔斯-PMS 玫瑰红、A 尔斯-POP207 白墨、A 尔斯-POP 白墨、A 尔斯-PT Green C、A 尔斯-PT801C 荧光墨、A 尔斯-PT803C 荧光黄、A 尔斯-PT804C 荧光墨、A 尔斯-PT807C 荧光墨、A 尔斯-PT809C 荧光墨、A 尔斯-PT 大红 (032C)、A 尔斯-TF171-金红、A 尔斯-TF172-大红、A 尔斯-TF173-桃红、A 尔斯-TF174-桔黄、A 尔斯-TF175-玫瑰红、A 尔斯-TF176-紫蓝、A 尔斯-TF177-射光蓝、A 尔斯-TF178-绿、A 尔斯-TF179-深蓝、A 尔斯-TF180-柠檬黄、A 尔斯-TF181-特黑、A 尔斯-TF182-群青、A 尔斯-TF183-青金、A 尔斯-TF184 红金、A 尔斯-TF185-银墨、A 尔斯-TF186-冲淡墨、A 尔斯-TF187-去粘剂、A 尔斯-TF188-白墨、A 尔斯-TF189-调墨油、A 尔斯-TF190-快干剂、A 尔斯-TF192-亮光浆、A 尔斯-TF193-哑油、A 尔斯-TF194- 中黄 (绿相)、A 尔斯-TF801 荧光蓝、A 尔斯-TF802 荧光绿、A 尔斯-TF803 荧光黄、A 尔斯-TF804 荧光橙、A 尔斯-TF805 荧光金红、A 尔斯-TF806 荧光桃红、A 尔斯-TF807 荧光玫瑰红、A 尔斯-TF814C 荧光墨、A 尔斯-白墨、A 尔斯-冲淡墨、A 尔斯-调墨油、A 尔斯-桔黄(数据库专用)、A 尔斯-耐磨剂、A 尔斯-耐磨特黑、A 尔斯-去粘剂、A 尔斯-桃红(数据库专用)、A 尔斯-紫蓝混合。



样品照片:



此照片仅限于随SGS正本报告使用

\*\*\* 报告完 \*\*\*